



**RAG**

Rahami Agri Group Ltd

# 2026 Company Profile

# **Content**

- 1. Welcome Message**
- 2. Company History**
- 3. Vision, Mission & Core Value**
- 4. Our Services and Products**
- 5. Why Choose us?**
- 6. Solution**
- 7. Our Team**
- 8. Contact Information**

# Welcome Message

**Rahami Agri Group** is leading the transformation of Tanzania's cashew industry through innovation, transparency, and social impact. Our farmer-first approach has already doubled incomes for over 100 smallholder farmers and positioned us as a trusted supplier of premium organic cashews to global markets. With a focus on sustainability and technology including blockchain traceability we are scaling operations and expanding our farmer network to drive inclusive growth. We are proud to deliver strong financial returns while empowering farming communities and shaping the future of agriculture in Africa.

**We invite you to be part of this journey.**

**Rahma Othman Jawa**

**Founder & CEO, Rahami Agri Group**




# Company History

## SINCE 2021

Since 2021, Rahami Agri Group has been transforming Tanzania's cashew value chain through innovation, decentralization, and community empowerment. We began by partnering with smallholder farmers and managing key cooperative warehouses, laying the foundation for sustainable operations.

In 2022, we successfully entered international markets, exporting premium organic cashews to global buyers. By 2023, we expanded into the Mediterranean market with major contracts, and in 2024, we secured land and financing to build a state-of-the-art processing facility.

Today, our decentralized model including rural processing centers, advanced traceability, and waste-to-value initiatives continues to create jobs, raise farmer incomes, and position Rahami as a leader in Africa's agricultural transformation.





## **VISION**

To become Africa's leading producer of ethical, traceable, and sustainably processed cashew products.



## **MISSION**

To transform Tanzania's cashew value chain from raw export dependency through community-integrated modular processing, zero-waste innovation, and digital traceability, ensuring farmers receive fair value, creating dignified rural jobs, and delivering premium cashew products to global markets.



## OUR CORE VALUES



**Integrity**



**Excellence**



**Community**



**Innovation**



**Sustainability**



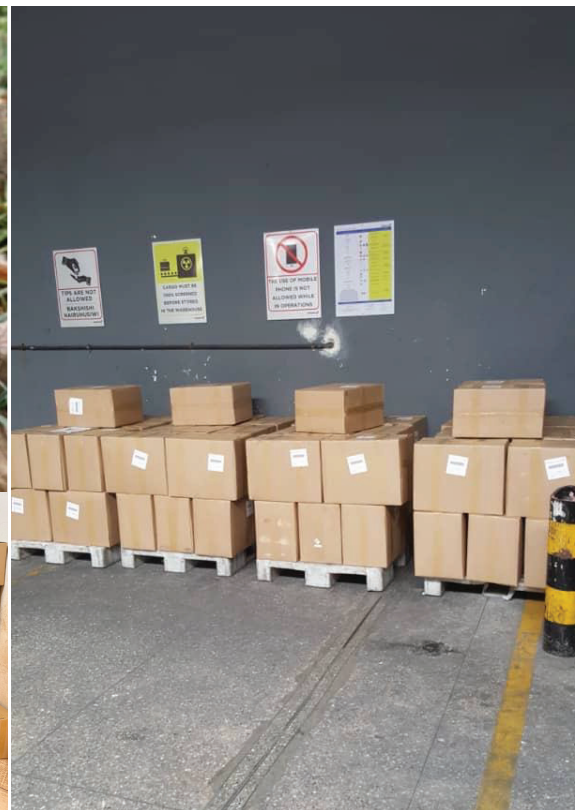
**Empowerment**

# Our Products and services

## Cashew Nut Products



## Cashew Processing



# Why Choose Us?

## Technological Innovation

We use advanced tech like AI analytics, blockchain traceability, and automated processing to boost efficiency. Our facilities meet global food safety standards and ensure consistent product quality. Digital systems streamline operations from farm to market. Innovation drives our competitive edge in cashew processing

## Environmental Sustainability

We practice zero-waste processing by converting by-products into CNSL and organic fertilizer. Post-harvest losses are reduced by 25% through better farmer training and equipment. We promote sustainable agriculture while increasing profit margins. Our eco-friendly model is designed to support carbon credit participation for 3,000+ farmers.

## Closing the Processing Infrastructure Gap

Our product range includes organic cashews, CNSL, and premium-grade outputs. We cater to both food and industrial markets with quality-certified products. Value addition increases revenue and reduces dependency on raw exports. Diversification strengthens our market presence and resilience.

## Partnerships and Distribution Network

We partner directly with over 1,000 farmers and 17 international buyers and distributors. These links secure premium prices up to 40% higher than standard exports. Fair trade practices and co-ops ensure inclusive local development. A strong network connects Tanzanian farms to global markets.



# Our Solution To Challenges

## Reducing Raw Export Dependence

We aim to significantly lower Tanzania's reliance on raw cashew exports currently at 95% by investing in local processing. This ensures more value stays within the country rather than being captured by multinational corporations abroad.

## Plugging Economic Value Leakage

By enabling the export of processed cashews, we help Tanzania regain its premium market positioning and unlock up to 400% more in export value, maximizing the country's agricultural earnings.

## Closing the Processing Infrastructure Gap

We are building and supporting modern domestic processing facilities to address the shortage that limits Tanzania's ability to compete globally and add value locally.

## Creating Socioeconomic Impact

Through local processing and inclusive employment strategies, we're working to create over 15,000 direct jobs with a focus on empowering women, who make up 95% of the cashew processing



# Our Team



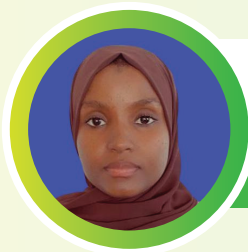
**RAHMA. O. JAWA**

C.E.O



**MOSES MSHANA**

HEAD FINANCE & ADMIN



**NAFISA ALLY**

ACCOUNTANT



**INGRID ARINGANIZA**

HEAD TECHNOLOGY  
AND SUSTAINABILITY



**PILLY UKWAJU**

FACTORY MANAGER



**MOHAMMED NASOR**

DIGITAL SOLUTIONS  
LEAD



**TUSIIME ROLINE**

PARTNERSHIP & RESOURCES  
MOBILIZATION OFFICER



**JOYCE JULIUS**

ADMIN & COMMS  
OFFICER



**SHABANI RAJABU**

PROCUREMENT AND  
LOGISTICS OFFICER



**ELIVIRA KOKUSIIMA**

FACTORY SUPERVISOR



**TITO G. JACKSON**

MACHINE OPERATOR AND  
MAINTENANCE TECHNICIAN



**JOYCE GITAU**

HEAD OPERATIONS

# Contact Information



**RAG**  
Rahami Agri Group Ltd

-  +255 658 933 900
-  +255 759 933 922
-  [www.rahamiagri.co.tz](http://www.rahamiagri.co.tz)
-  [info@rahamiagri.co.tz](mailto:info@rahamiagri.co.tz)
-  P.O Box 11247 Tegeta Nyuki,
-  Dar es salaam, Tanzani

